



## House Measurements & Floor Plan

Property Address:  
**5044 Sunset Fairways Dr., Holly Springs, NC 27540**

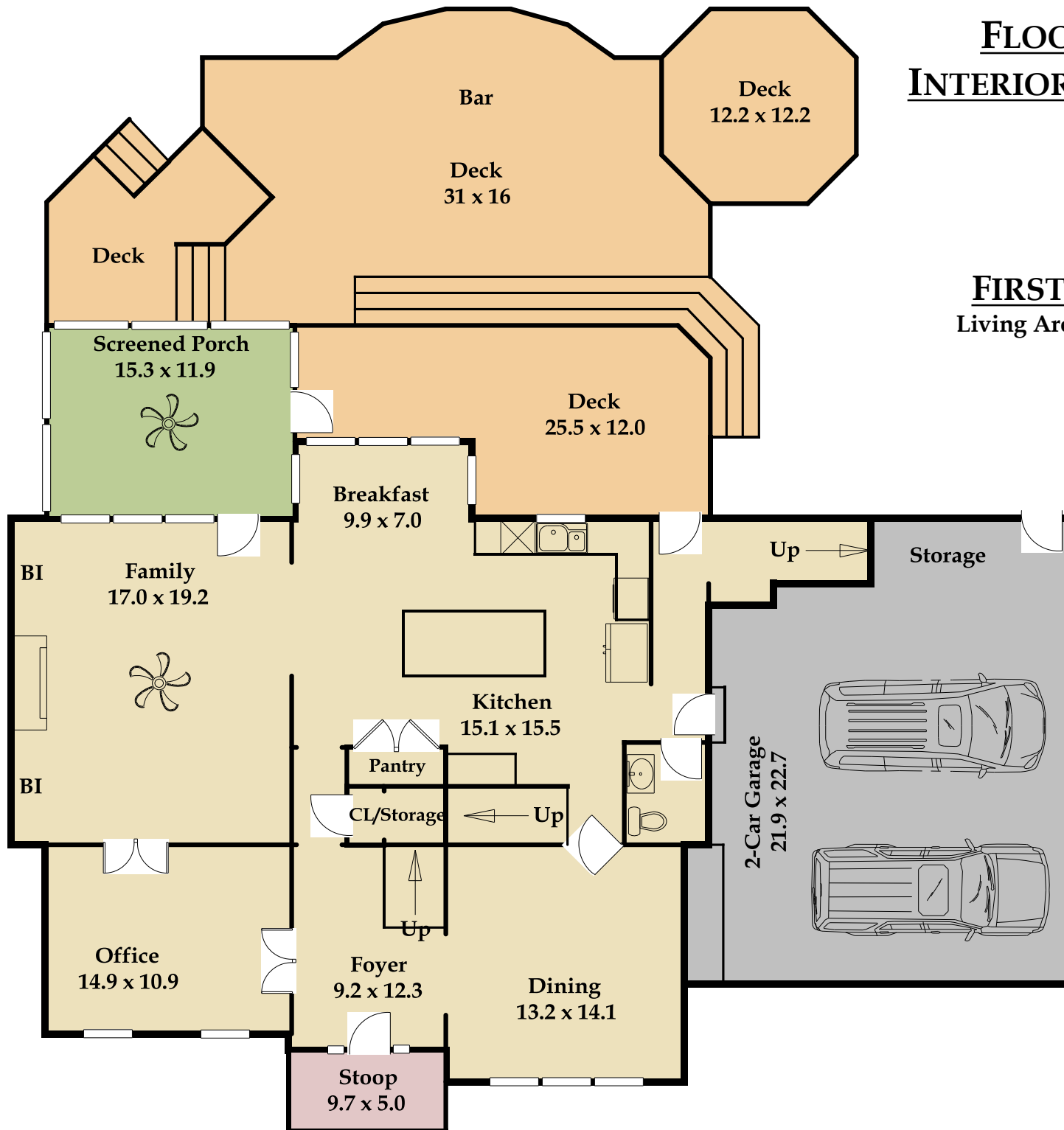
Prepared for:  
**Lauren Klein**  
**Fonville Morisey - Lochmere**  
**July 10, 2018**



**Farshid Bondar**  
**(919) 917-5490**

[www.TriangleAppraisingServices.com](http://www.TriangleAppraisingServices.com)

# FLOOR PLAN & INTERIOR DIMENSIONS

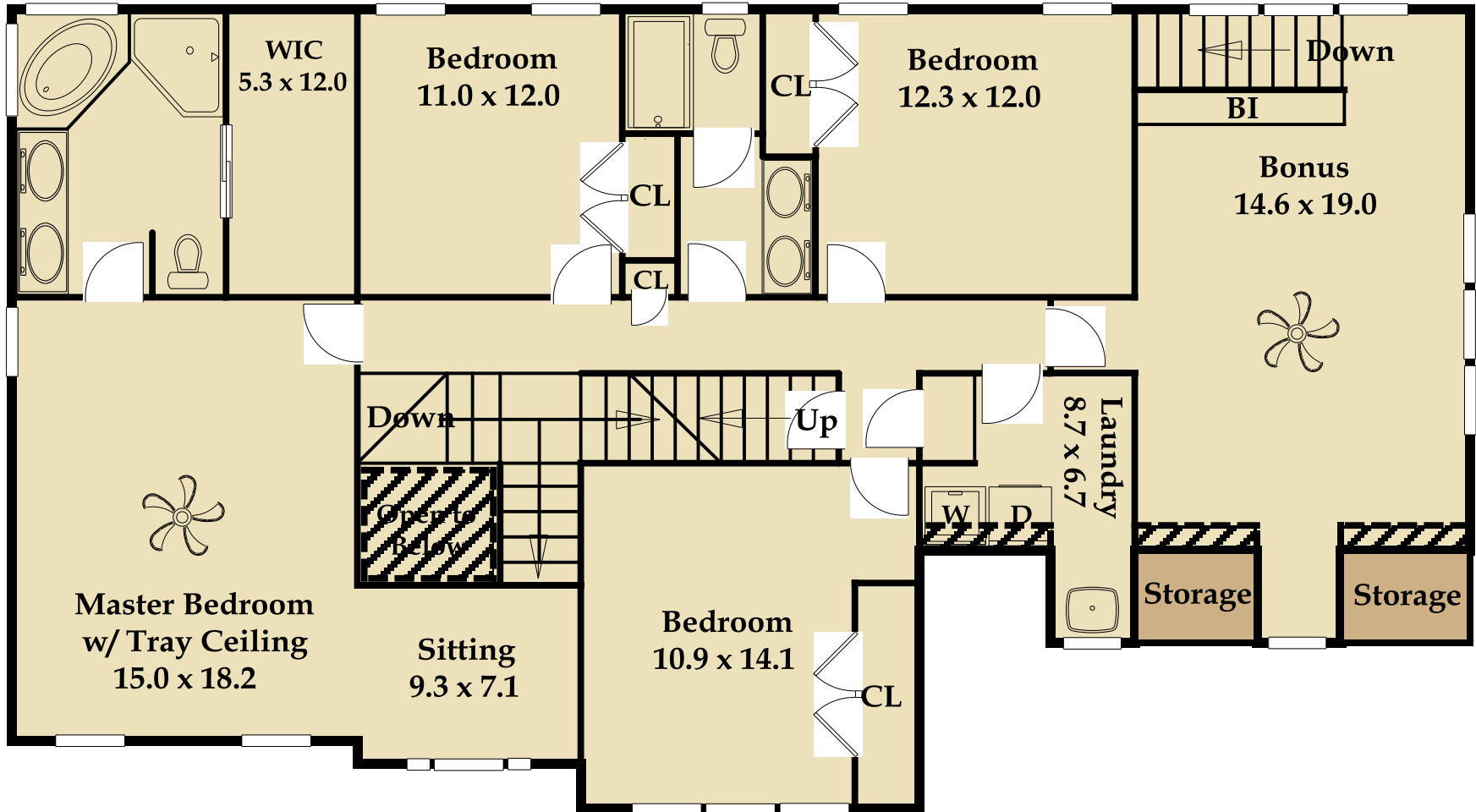


**FIRST FLOOR**  
Living Area: 1,474 sq ft

# FLOOR PLAN & INTERIOR DIMENSIONS

## SECOND FLOOR

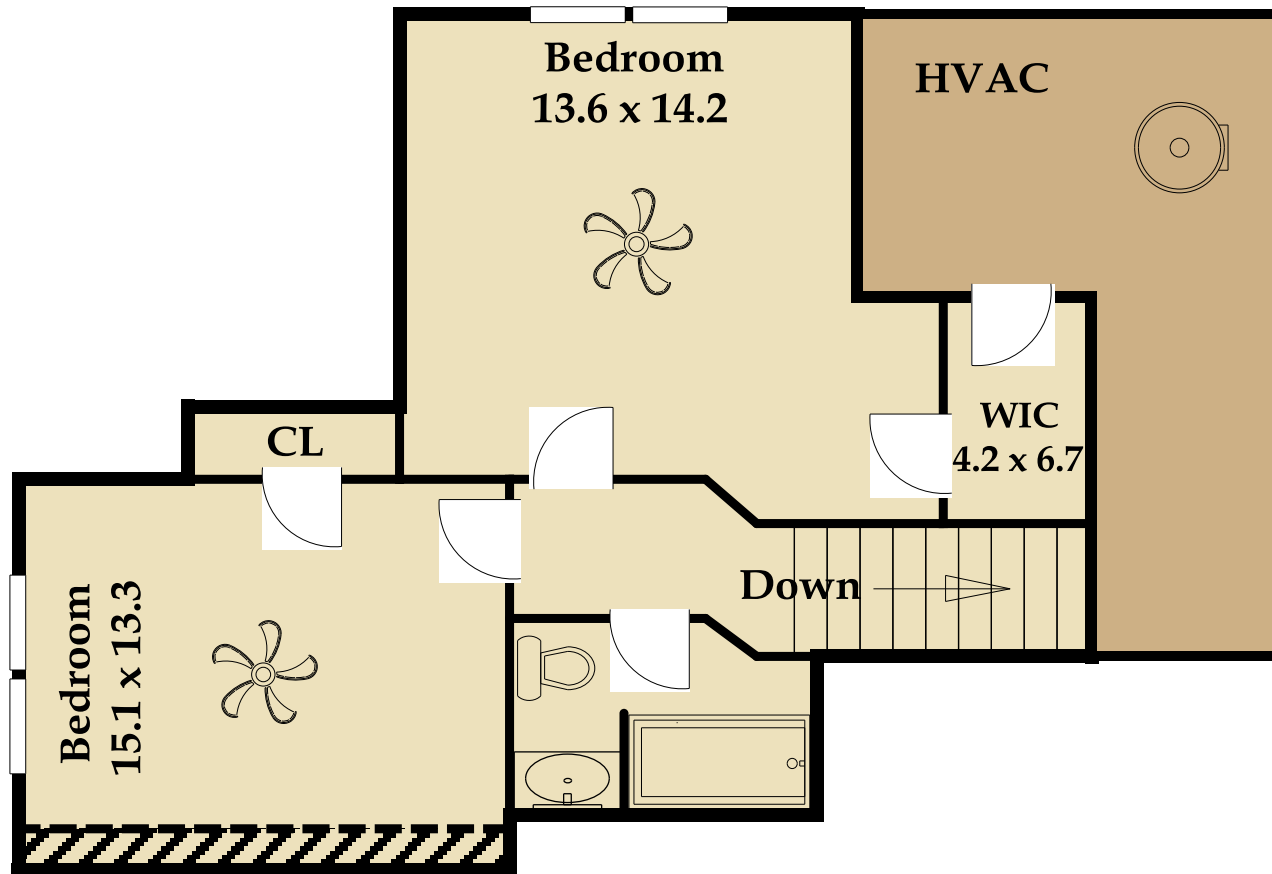
Living Area: 1,850 sq ft



# FLOOR PLAN & INTERIOR DIMENSIONS

## THIRD FLOOR

Living Area: 595 sq ft



# LIVING AREA CALCULATION DETAILS

<b>TOTAL LIVING AREA:</b>	<b>3,919 sq ft</b>
<b>First Floor Living Area:</b>	<b>1,474 sq ft</b>
<b>Second Floor Living Area:</b>	<b>1,850 sq ft</b>
<b>Third Floor Living Area:</b>	<b>595 sq ft</b>
<b>Deck Area:</b>	<b>1,026 sq ft</b>
<b>Screened Porch Area:</b>	<b>183 sq ft</b>
<b>Garage Area:</b>	<b>610 sq ft</b>

<b>Living Area</b>		<b>Calculation Details</b>	
First Floor	1473.57 Sq ft	10.9 × 4.75	= 51.78
		4 × 6	= 24.03
		5.35 × 4	= 21.4
		43 × 20.1	= 864.3
		14.6 × 14.7	= 214.62
		11.65 × 15	= 174.75
		12.65 × 9.7	= 122.7
Second Floor	1894.86 Sq ft	3.65 × 4	= 14.6
		3.65 × 4	= 14.6
		23.5 × 23.9	= 561.65
		39.4 × 31.75	= 1250.95
		2.95 × 14.7	= 43.36
		1 × 9.7	= 9.7
Open to Below	-26.32 Sq ft	5.6 × 4.7	= 26.32
Less than 5 ft Height	-6.27 Sq ft	5.7 × 1.1	= 6.27
Less than 5 ft Height	-6.16 Sq ft	1.1 × 5.6	= 6.16
Less than 5 ft Height	-5.83 Sq ft	5.3 × 1.1	= 5.83
Less than 5 ft Height	-20.22 Sq ft	1.3 × 15.55	= 20.22
Third Floor	615.06 Sq ft	11.4 × 7.4	= 84.36
		14.5 × 12.4	= 179.8
		12.35 × 5.35	= 66.07
		14.65 × 10.2	= 149.43
		12.9 × 9.7	= 125.13
		1.3 × 7.9	= 10.27
<b>Total Living Area (Rounded):</b>	<b>3919 Sq ft</b>		

**Usage License**  
 Use of images and documents will be granted to the real estate agent client and their brokerage for the sole purpose of marketing the specific property, including distribution to the Triangle MLS, feeds, and syndication. This usage is limited to the duration of the listing as long as the real estate agent client is representing the sale of the property.  
 The real estate agent client may also use the documents listed above for an unlimited time period beyond the listing time frame in their local area for their self-promotion.  
 TRIANGLE APPRAISING SERVICES retains copyright of all images and documents.  
 Any usage of the images and documents by a third party, including but not limited to, a new listing agent, architects, builders, stagers, designers, sellers or buyers for commercial use is strictly prohibited unless approved in writing by TRIANGLE APPRAISING SERVICES. However, images and documents may be given to the seller of the property for non-commercial, personal use. This license is not transferable. If further usage is desired for additional time frames and/or uses by the client and/or another person or entity, TRIANGLE APPRAISING SERVICES encourages contact for an estimate of the fee(s) which may be incurred and to obtain written permission to do so.